

- Strong die-cast LM24 aluminium body and cover frame. Graphite, full polyester powder finish as standard
- Silver or white finish options
- Two diffuser options - opal or high efficiency satin polycarbonate
- Choice of four cover styles
- Complies with M.O.D. JSP482 Chapter 8 Document for 'Category C' areas
- Fitted with lamp



Hood & Grill

IP66



Hood



Plain & Grill



Plain

Range

LAMP	PLAIN VERSION	HOOD VERSION	APPROX. kg	PLAIN & GRILL VERSION	HOOD & GRILL VERSION	APPROX. kg	STANDARD CIRCUIT	EMERGENCY CIRCUIT	AUTOTEST CIRCUIT
OPAL DIFFUSER									
26W TC-T ■	-	CT 11460 ◆	3.1	-	CT 11461 ◆	3.3	J	J	J
28W 2D +	CT 11462	-	3.5	-	-	-	J	J	J
38W 2D +	CT 11464	-	3.5	-	-	-	J	J	J
HIGH EFFICIENCY SATIN DIFFUSER ▲									
26W TC-T ■	-	CT 11572 ◆	3.3	-	CT 11581 ◆	3.5	J	J	J
28W 2D +	CT 11573	-	3.7	CT 11574	-	3.9	J	J	J
38W 2D +	CT 11575	-	3.7	CT 11576	-	3.9	J	J	J

- + 3500K lamp(s) fitted
- 4000K lamp fitted

CIRCUIT: J - high frequency

COLOUR OPTIONS - add suffix required: SV3 - Silver W9 - White e.g. CT 11460JSV3 etc.

EMERGENCY VERSIONS - prefix catalogue number with 'ECT'.

AUTOTEST VERSION - prefix catalogue number with 'TCT'.

Emergency and AutoTest versions add 0.7kg to weights listed.

◆ PHOTOCCELL OPTION - see page 28

▲ NOTE: Lamp more visible than opal versions when lit



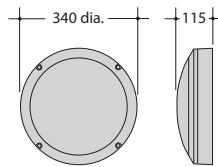
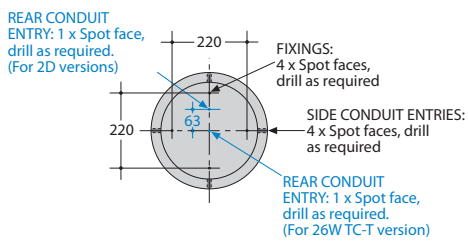
High Efficiency Satin Diffuser



Opal Diffuser

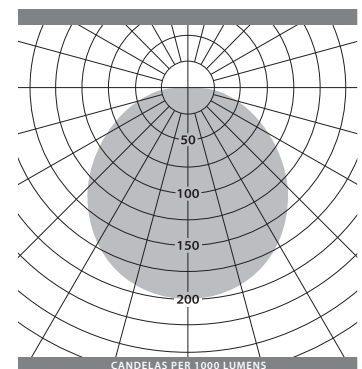


Fixings and Conduit Entries



Photometric Guide

38W 2D LAMP (Ceiling mounted)
D.L.O.R. 59% U.L.O.R 0%



FACTOR: 28W 2D OPAL = 0.75
38W 2D OPAL = 0.75
28W 2D SATIN = 1.03

Accessory

DESCRIPTION	CAT. No.
Tamper-resistant screw kit including key	CT 11699

Options

DESCRIPTION	SUFFIX
Photocell - 26W TC-T graphite finish hood and hood & grill only	PC

e.g. CT 11460JPC etc